

# RECORD OF SURVEY

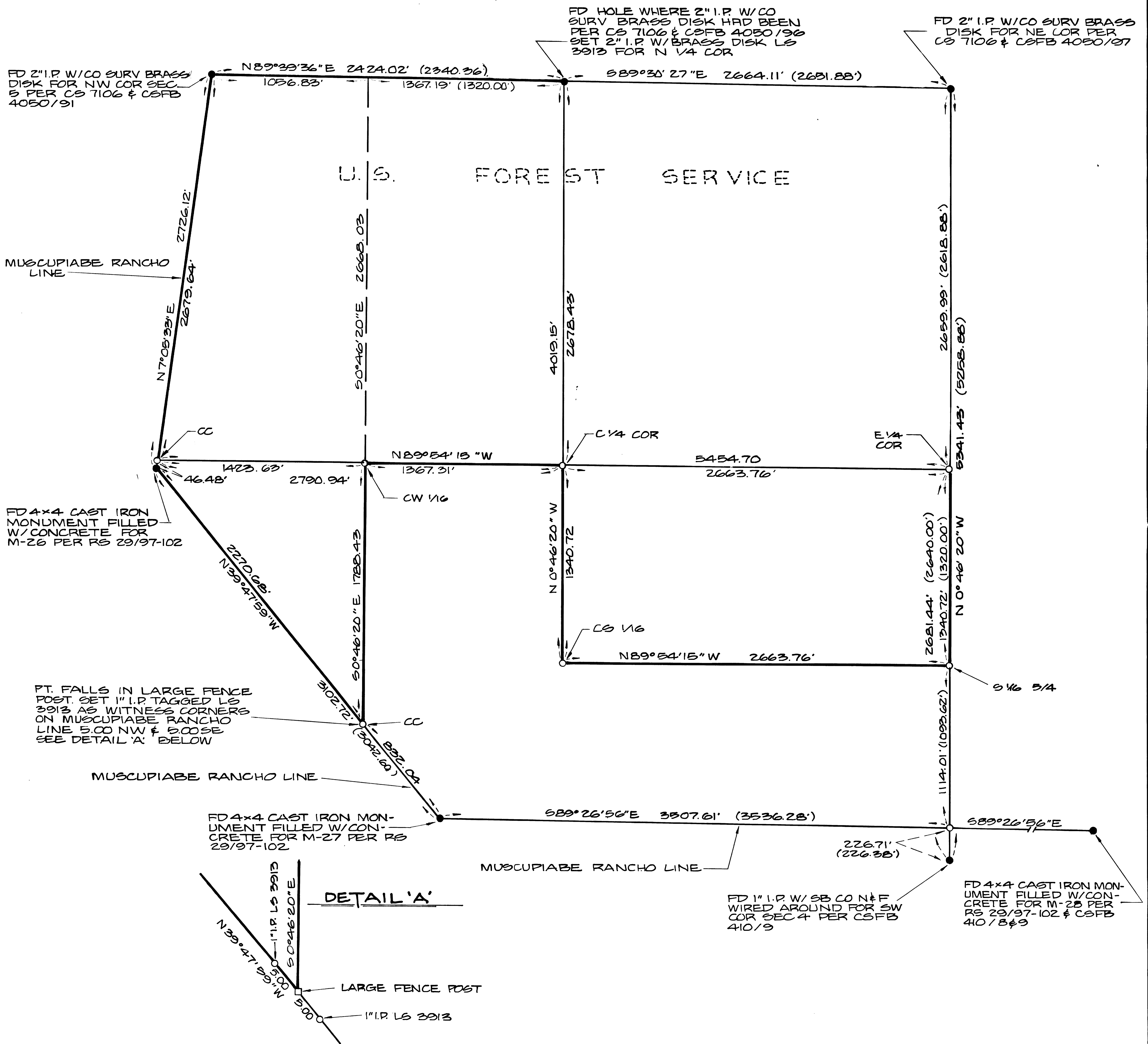
BEING A SURVEY OF SECTION 5, TOWNSHIP 1 NORTH, RANGE 4 WEST, SAN BERNARDINO MERIDIAN, COUNTY OF SAN BERNARDINO, STATE OF CALIFORNIA.

KRUEPER ENGINEERING & ASSOCIATES

JUNE 1979

### NOTES

- BASIS OF BEARING BEING THE NORTHLINE OF NE 1/4 OF SEC 5  
TIN R4W PER CS 7106 BEING S89°30'27"E
- INDICATES 2" I.P. W/BRASS DISK LS 3913 SET
  - INDICATES MONUMENTS FOUND AS NOTED
  - ( ) INDICATES RECORD PER GOVERNMENT TOWNSHIP PLAT DATED JUNE 24, 1898
  - CS INDICATES COUNTY SURVEYOR'S MAP
  - CSFB INDICATES COUNTY SURVEYOR'S FIELD BOOK
- DISTANCES ARE GRID TO OBTAIN GROUND DISTANCES MULTIPLY GRID DISTANCE BY 1.00019465



### SURVEYOR'S CERTIFICATE

THIS MAP CORRECTLY REPRESENTS A SURVEY MADE BY ME OR UNDER MY DIRECTION IN CONFORMANCE WITH THE LAND SURVEYORS ACT AT THE REQUEST OF THE U.S. FOREST SERVICE IN JUNE 1979.

*Carson L. Storer*  
CARSON L. STORER L.S. 3913

### COUNTY SURVEYOR'S CERTIFICATE

THIS MAP HAS BEEN EXAMINED FOR CONFORMANCE WITH THE REQUIREMENTS OF THE LAND SURVEYORS ACT THIS 24<sup>th</sup> DAY OF JULY 1979.

EUGENE P. EHE  
COUNTY SURVEYOR  
COUNTY OF SAN BERNARDINO

BY *Larry E. Colton*, DEPUTY.

1436
FILED REQUEST OF
U.S. FOREST SERVICE
ON July 3, 1979
AT 3:00 P.M. IN
BOOK 38 PAGE 11
OF RECORDS OF SURVEY
SAN BERNARDINO COUNTY
V. Dennis Wardle, Clerk-Recorder
FEE \$ 5.00